

Title:

**SECTION 3.0 NZBMDR STANDARDS
AREAS OF RESPONSIBILITY IN THE
NZBMDR**

Authorised by:

Executive Officer

Contributing Authors:

ABMDR

Dr Hilary Blacklock

Raewyn Fisher

Table of Contents

SECTION 3.0	NZBMDR STANDARDS AREAS OF RESPONSIBILITY	
TABLE 1	Areas of responsibility-----	3
TABLE 2	Organisation Chart with outside entities and affiliations-----	4
TABLE 3	Relationships Chart-----	5
TABLE 4	Flow chart for potential donors-----	6

Table 1	
Areas of Responsibility	
Donor	Patient
<i>Donor Recruitment-NZBS</i> <ul style="list-style-type: none"> • <i>Information, Interview, enrolment</i> • <i>Consent A</i> • <i>Infectious Disease markers</i> 	
<i>All Donors HLA Class 1 and 11 typed at recruitment</i>	<i>Recipient tissue typed 2 samples High resolution</i>
Patient requested donor extended typing <ul style="list-style-type: none"> • Donor phoned • New sample if no DNA stored 	<i>Family tissue typing</i> <ul style="list-style-type: none"> • NZBMDR assistance for family both inside and outside NZ
Patient requested Verification testing (VT) <ul style="list-style-type: none"> • Information /interview • Written consent • <i>Infectious disease markers tested</i> • TT sample sent to Transplant centre 	Recipient/ donor match suitability decided by Transplant Centre
<i>DNA Class 1 and Class 2 high resolution typing if NZ donor NZ patient</i>	
Donor Workup <ul style="list-style-type: none"> • <i>Independent third party haematologist</i> • <i>Information/counselling</i> • <i>Medical assessment</i> • <i>Consent and Clearance to donate</i> 	Pre transplant patient conditioning
HPC donation <ul style="list-style-type: none"> • GcSF for HPC (A) • <i>Final consent at collection centre</i> • <i>Collection</i> • Transport of cells • Donor insurance and expenses 	
HPC infusion	
Donor and recipient follow up	Recipient transplant management

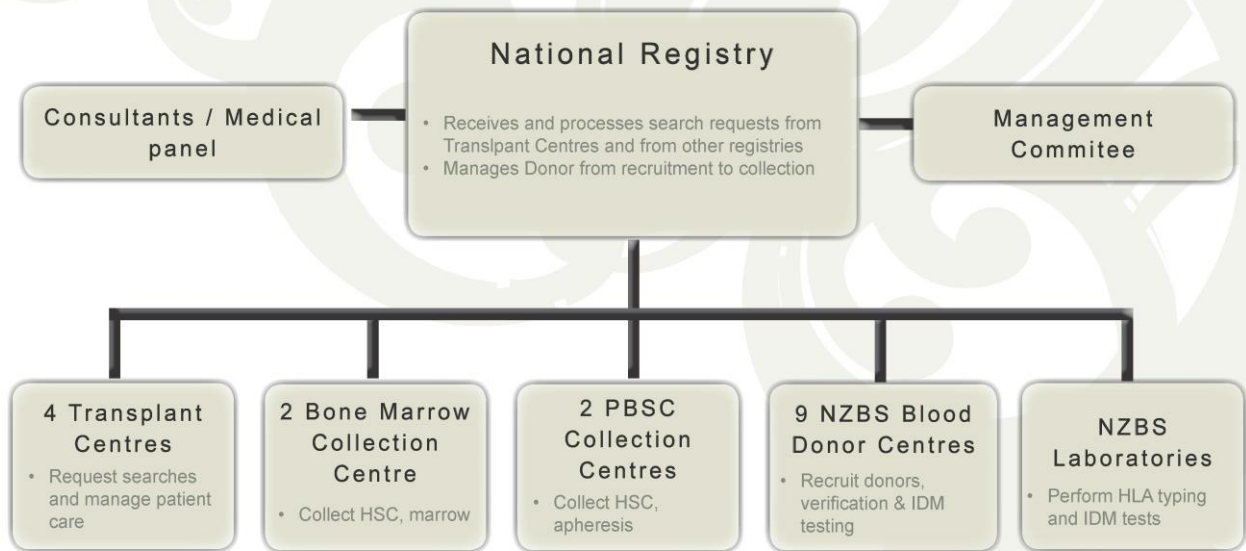
Bold NZBMDR

Italics NZBS New Zealand Blood Service

Green Collection Centre either NZBS or a public hospital

Red Transplant Centre

Organisation chart with outside entities and affiliations



New Zealand Bone Marrow Donor Registry Relationships

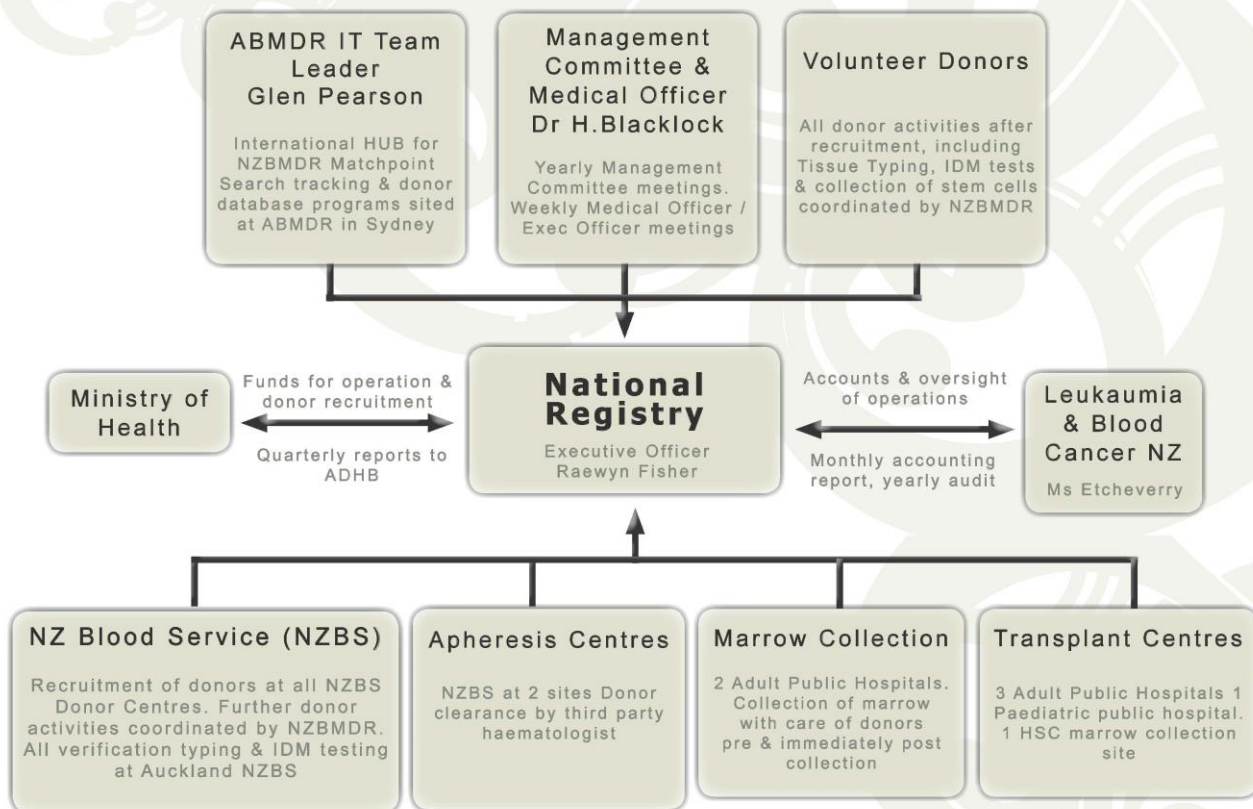


Table 4
FLOW CHART FOR POTENTIAL STEM CELL DONORS

