

Title:

**SECTION 9.0 NZBMDR STANDARDS  
PROCESS FOR AN UNRELATED STEM CELL  
DONOR WORKUP & IDENTIFICATION OF  
CORD BLOOD UNITS**

Authorised by:

Executive Officer

Contributing Authors:

Dr Hilary Blacklock

Raewyn Fisher

## Table of Contents

SECTION 9.0	NZBMDR STANDARDS PROCESS FOR AN UNRELATED STEM CELL DONOR WORKUP & IDENTIFICATION OF CORD BLOOD	
	Introduction - Minimum criteria for release of NZBMDR Donor... ..	3
Table 16	New Zealand Patient - New Zealand Donor... ..	4
Table 17	New Zealand Patient - ABMDR donor.....	5
Table 18	New Zealand Patient - International Donor .....	6
Table 19	International Patient - New Zealand Donor .....	7
Table 20	New Zealand Patient - Cord Blood Unit .....	8

## CRITERIA FOR RELEASE OF NZBMDR DONORS

Collection of stem cells from an NZBMDR donor will be approved under criteria listed in the publication "Indications for Haematopoietic Stem Cell Transplantation" compiled by the Bone Marrow Transplant Study Group of the Haematology Society of Australia and New Zealand and the EBMT special report of "Allogeneic and autologous transplantation for haematological diseases, solid tumours and immune disorders : definitions and current practice in Europe".

If a Transplant is considered Non-standard, High Risk or Experimental under these criteria the collection must be approved by the Scientific Advisory Committee. If the collection is approved the donor must be informed of the committees reasoning before deciding whether to proceed with donating stem cells.

NZBMDR will release donors to Transplant Centres searched by Registries participating on BMDW. Other Transplant Centres, not associated with BMDW are required to forward credentials which will be considered by the Scientific Advisory Committee before a donor will be released.

NZBMDR allows a one antigen mismatch of HLA A, B, DRB1\* between patient and donor.

9.1 PROCESS FOR UNRELATED STEM CELL DONOR WORKUP FOR NEW ZEALAND PATIENT - USING a NZ DONOR

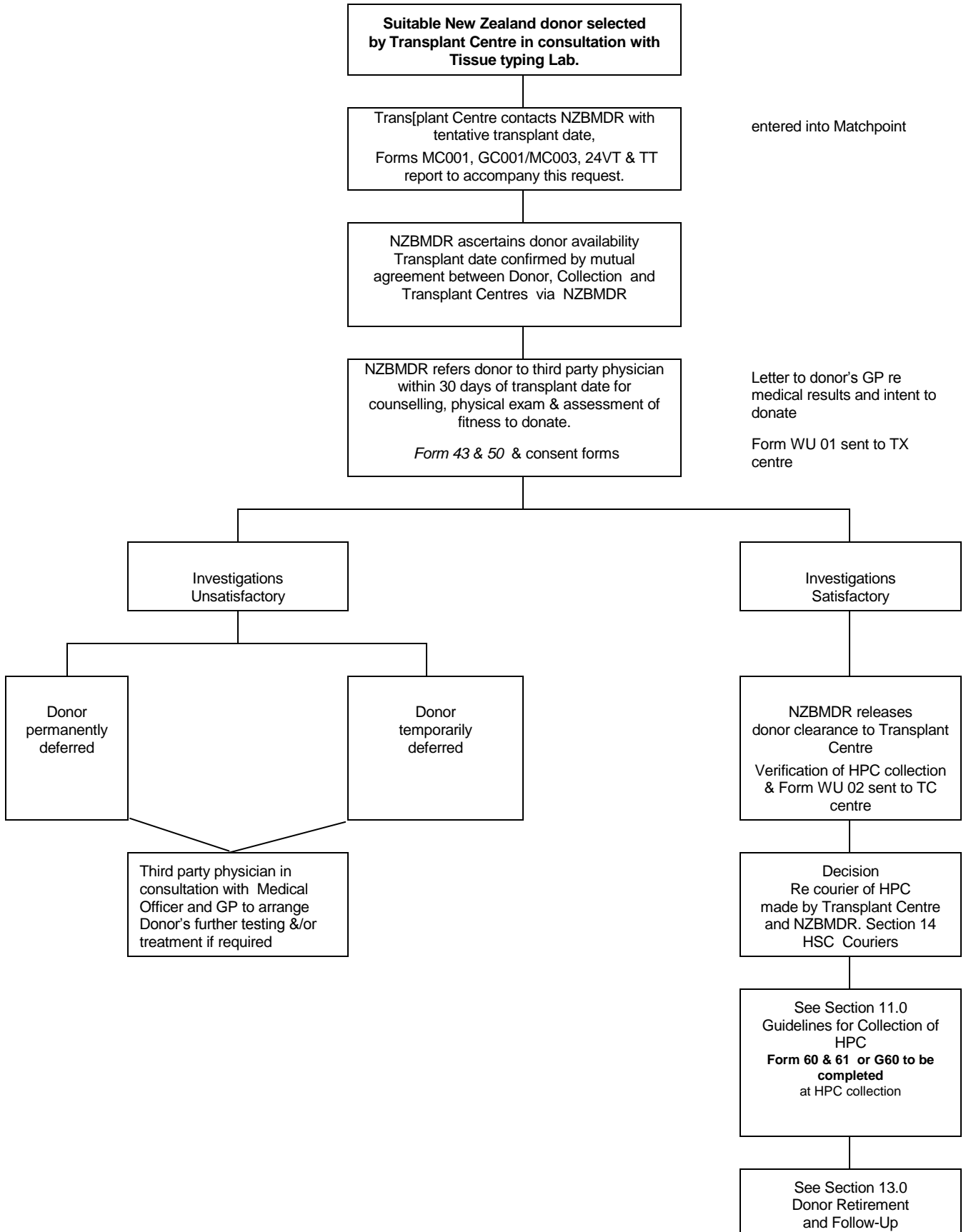
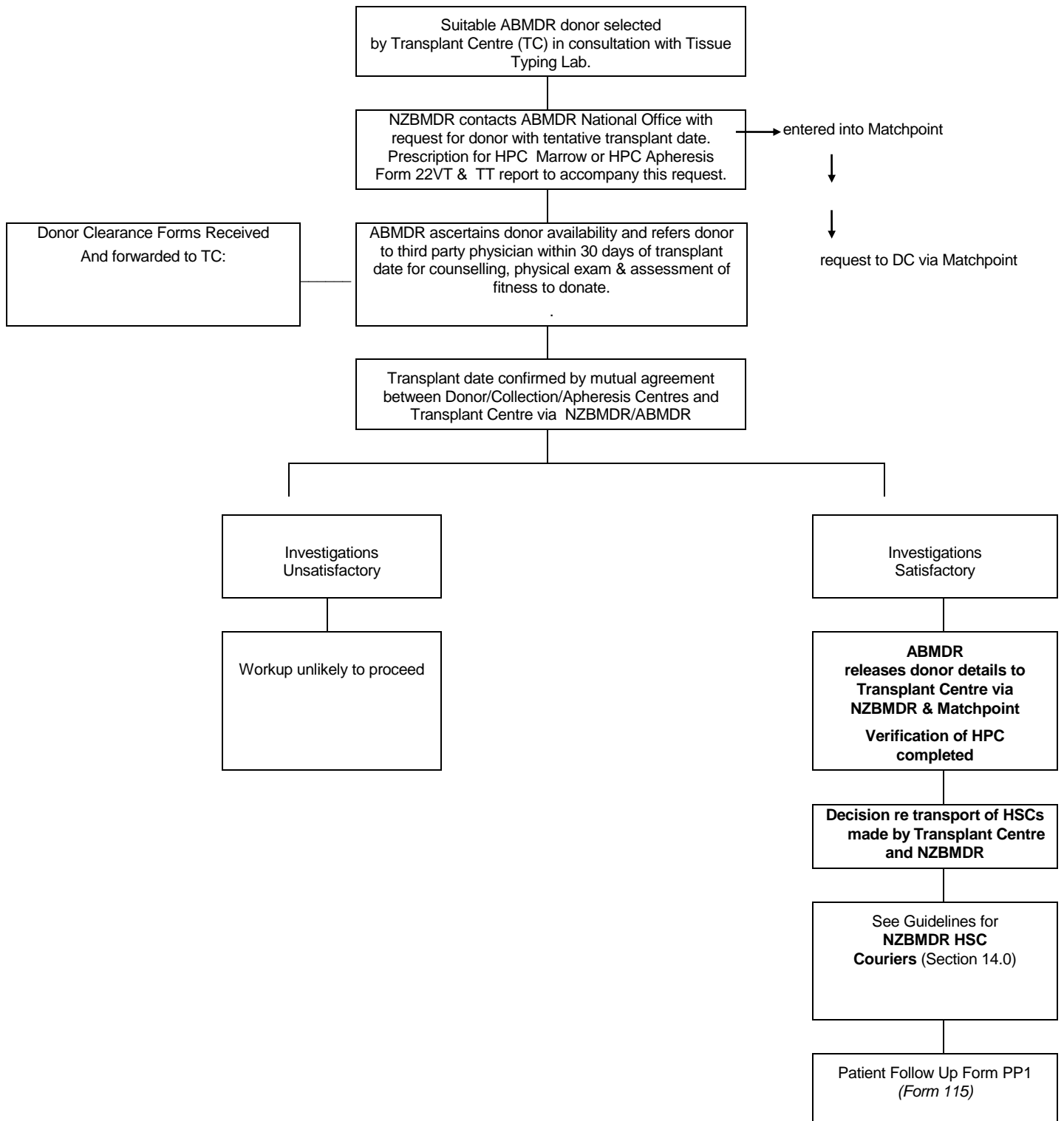


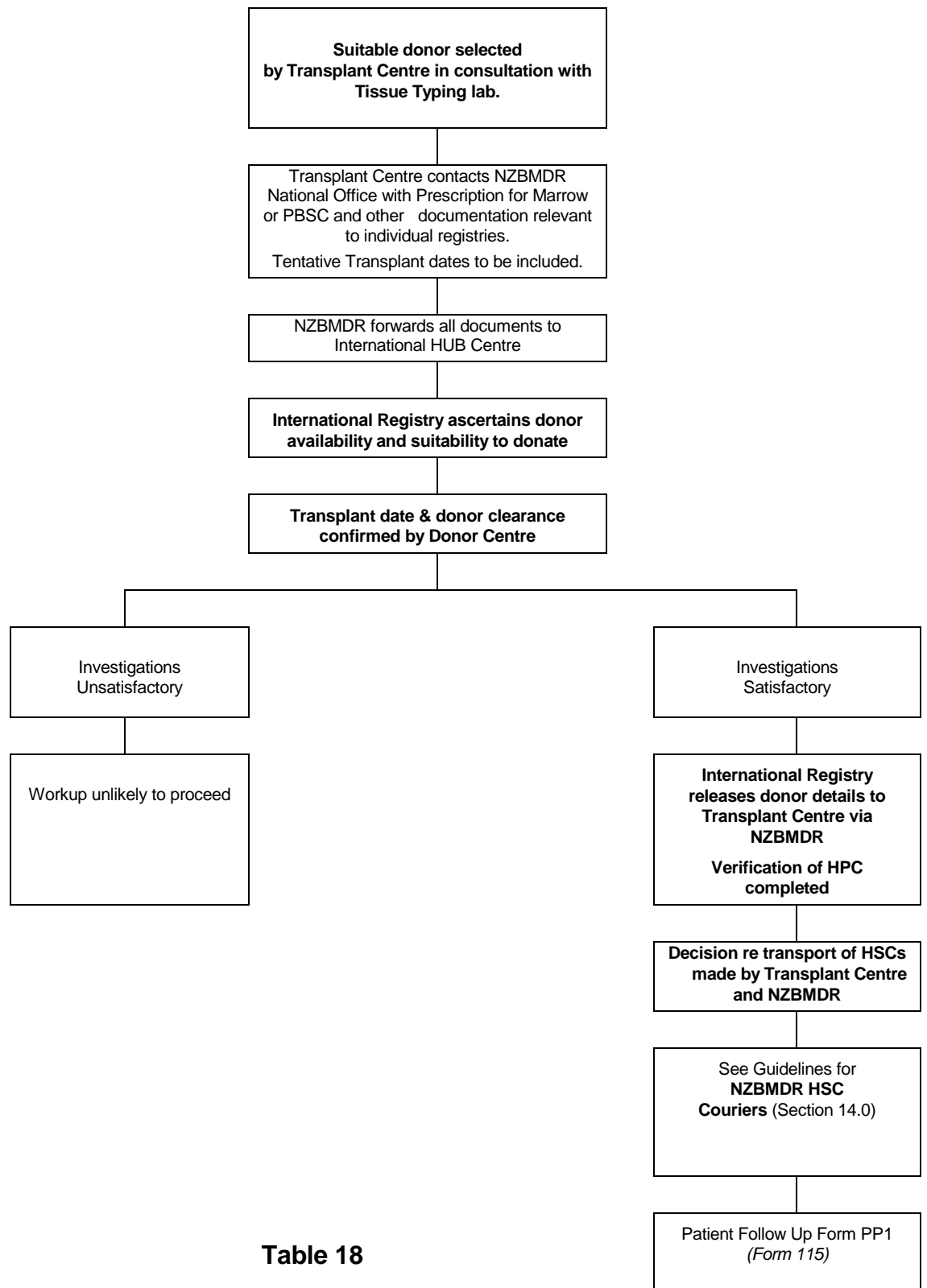
Table 16

**9.2 PROCESS FOR UNRELATED STEM CELL DONOR WORKUP FOR NEW ZEALAND PATIENT - USING AN AUSTRALIAN DONOR**



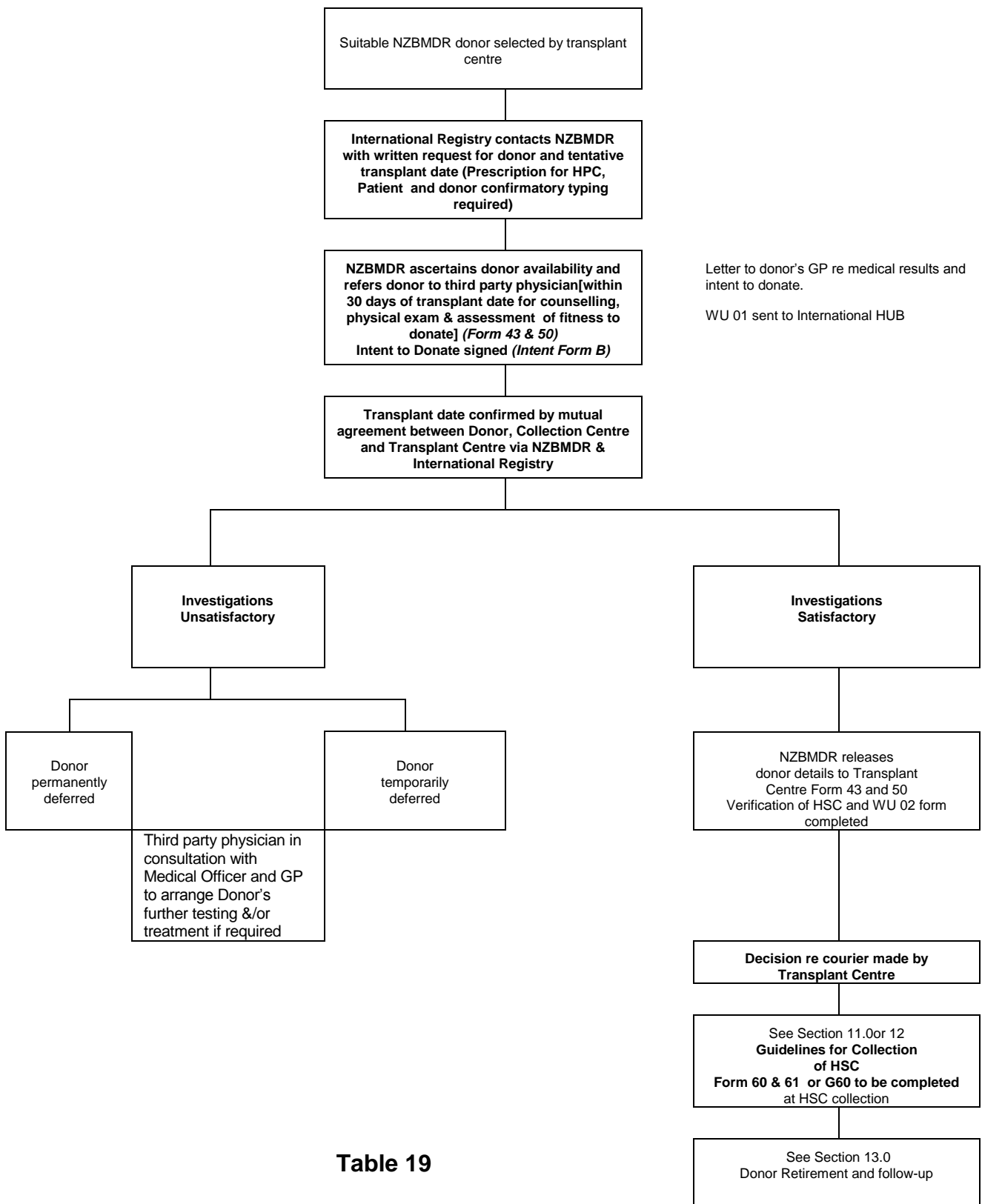
**Table 17**

**9.3 PROCESS FOR UNRELATED STEM CELL DONOR WORKUP FOR A NEW ZEALAND PATIENT - USING AN INTERNATIONAL DONOR**



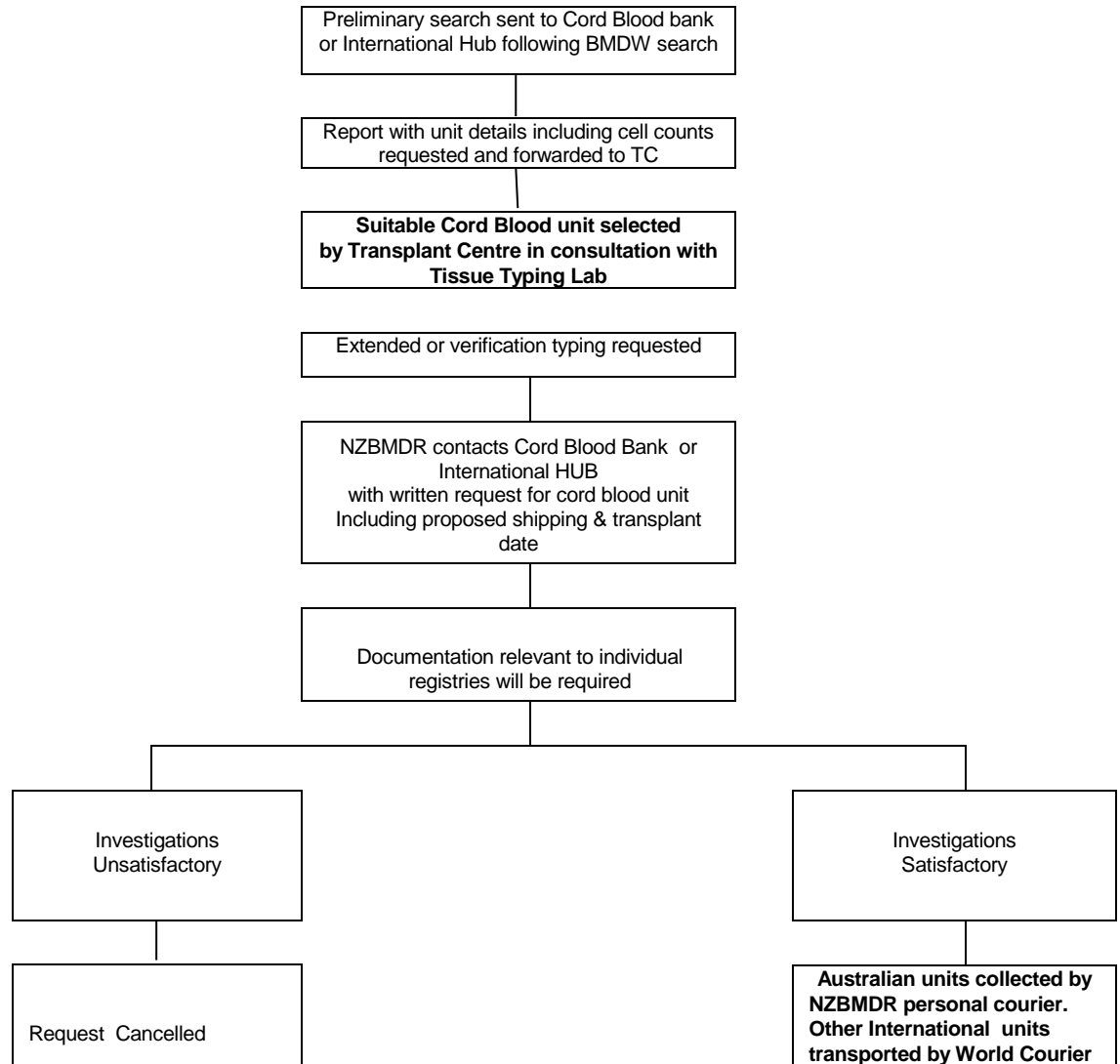
**Table 18**

**INTERNATIONAL PATIENT - USING A NEW ZEALAND DONOR**



**Table 19**

**9.5 PROCESS FOR PROCUREMENT OF CORD BLOOD FOR A NEW ZEALAND PATIENT - USING AN INTERNATIONAL CORD BLOOD UNIT**



**Table 20**